



Pierce School Building Committee Agenda

1. Announcements, Updates, and Comments
2. Project Approvals:
 - April 1, 2022 SBC Meeting Minutes
 - April 14, 2022 SBC Meeting Minutes
 - March 14, 2022 CMR Selection Committee Meeting Minutes
 - April 8, 2022 CMR Selection Committee Meeting Minutes
3. Consigli Introduction
4. Building Design Progress
5. Old Business
6. New Business
7. Public Comment

Pierce School Building Committee Meeting

04/28/2022



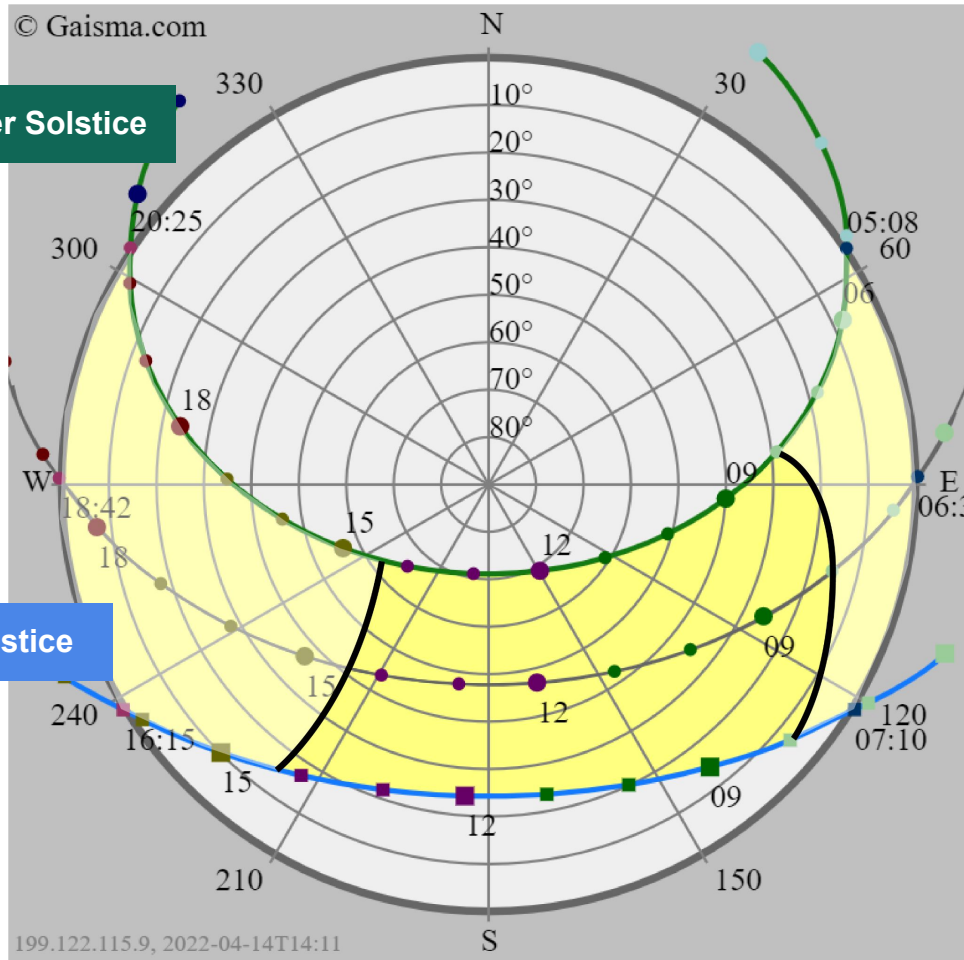
Agenda: Exterior Design Progress

- Daylighting and Shading
- Exterior Building Progress
- Discussion + Next Steps

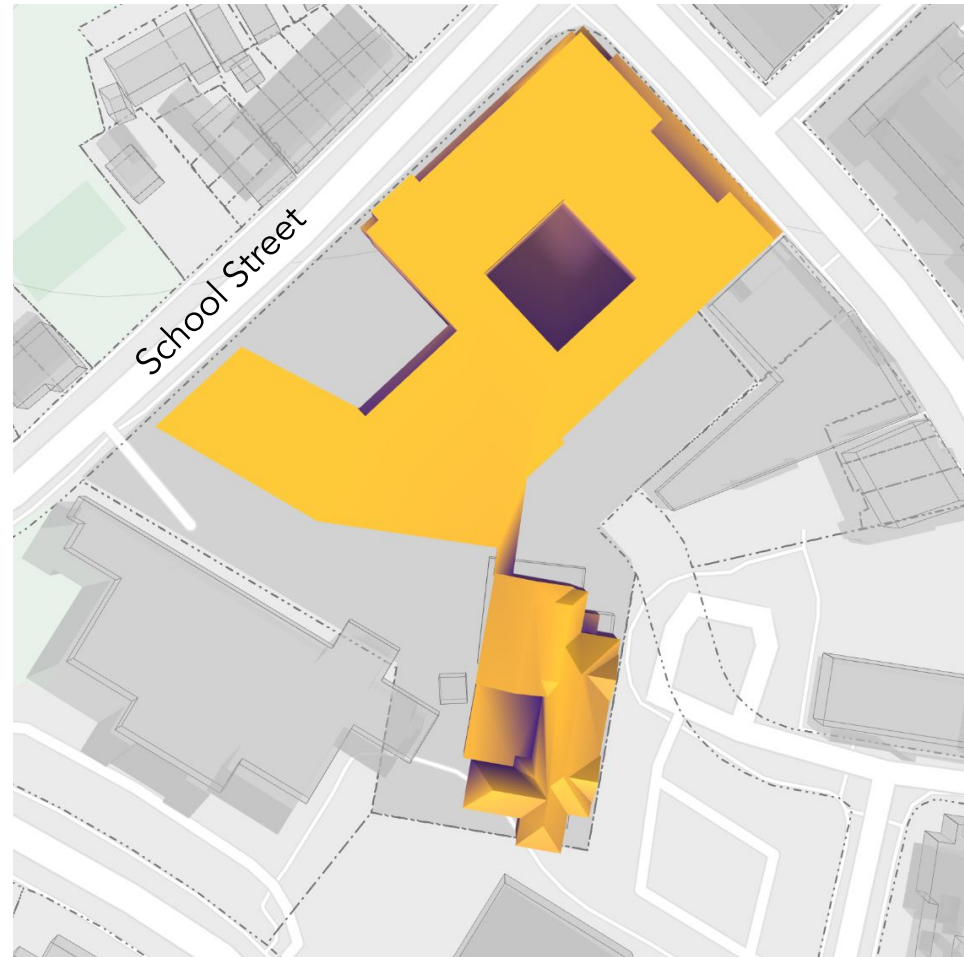
Daylighting

Focus on the larger open spaces

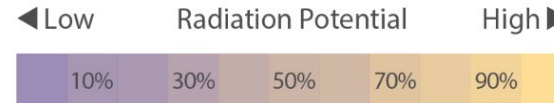
Building Scale- Solar Radiance Potential



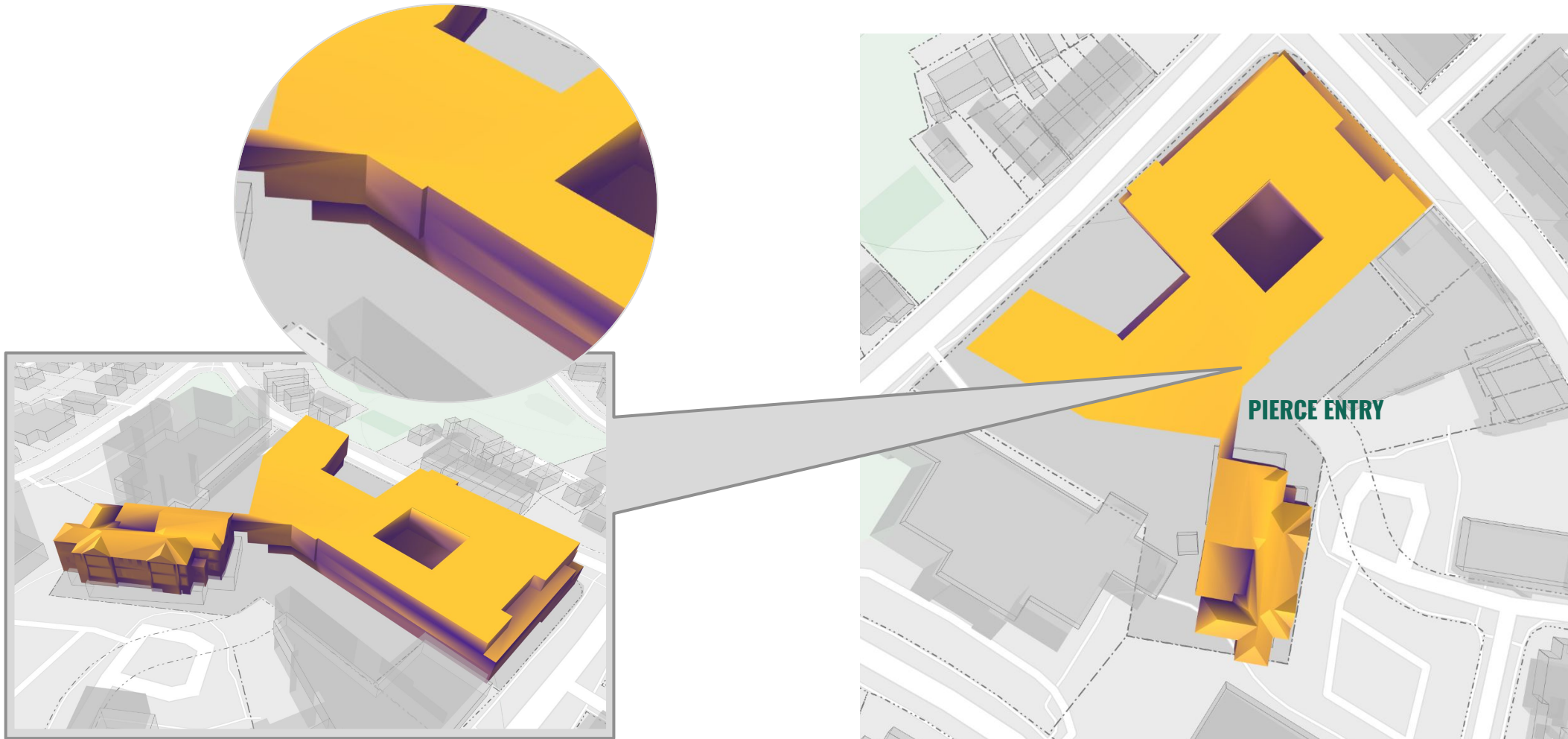
Sun Path Diagram
(School hours 8:00-2:30)



Legend

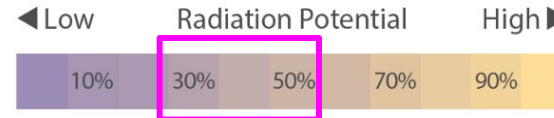


Building Scale- Solar Radiance Potential

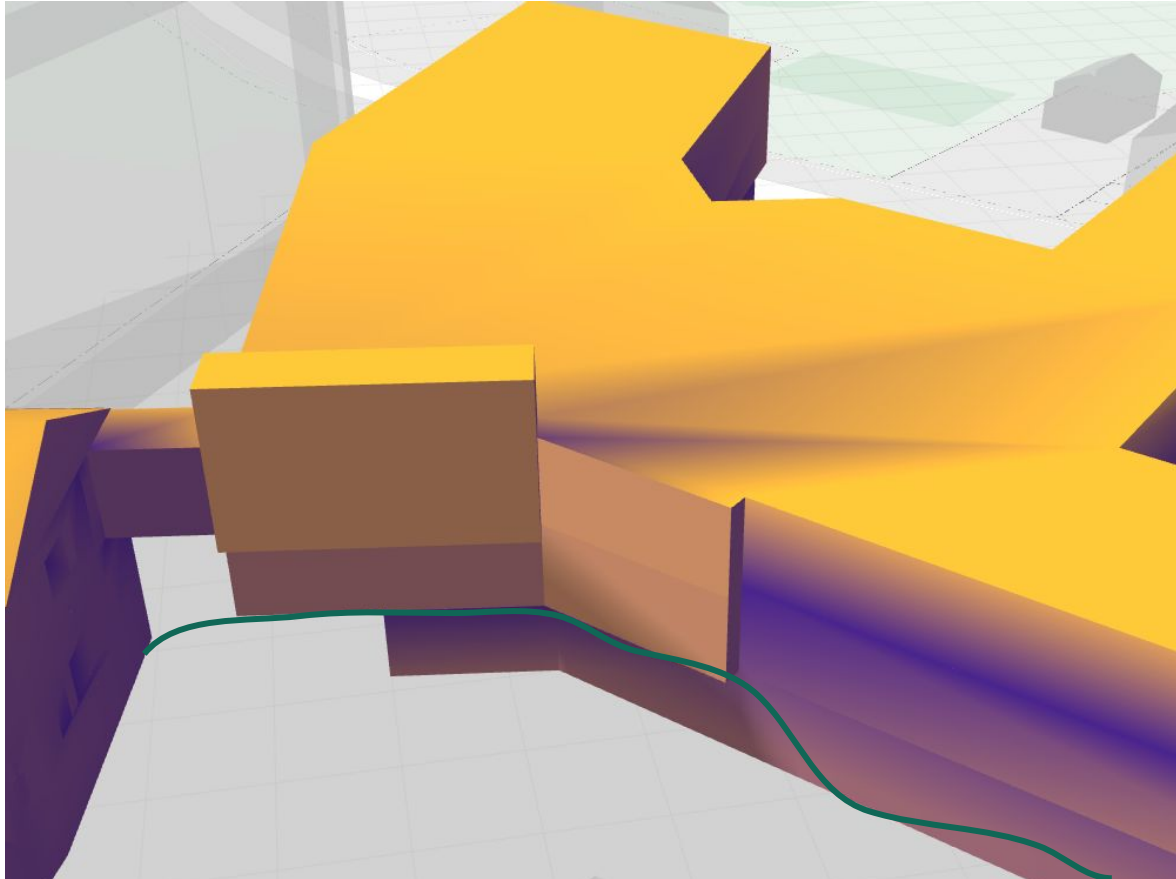


South-East: Pierce Entry

Legend



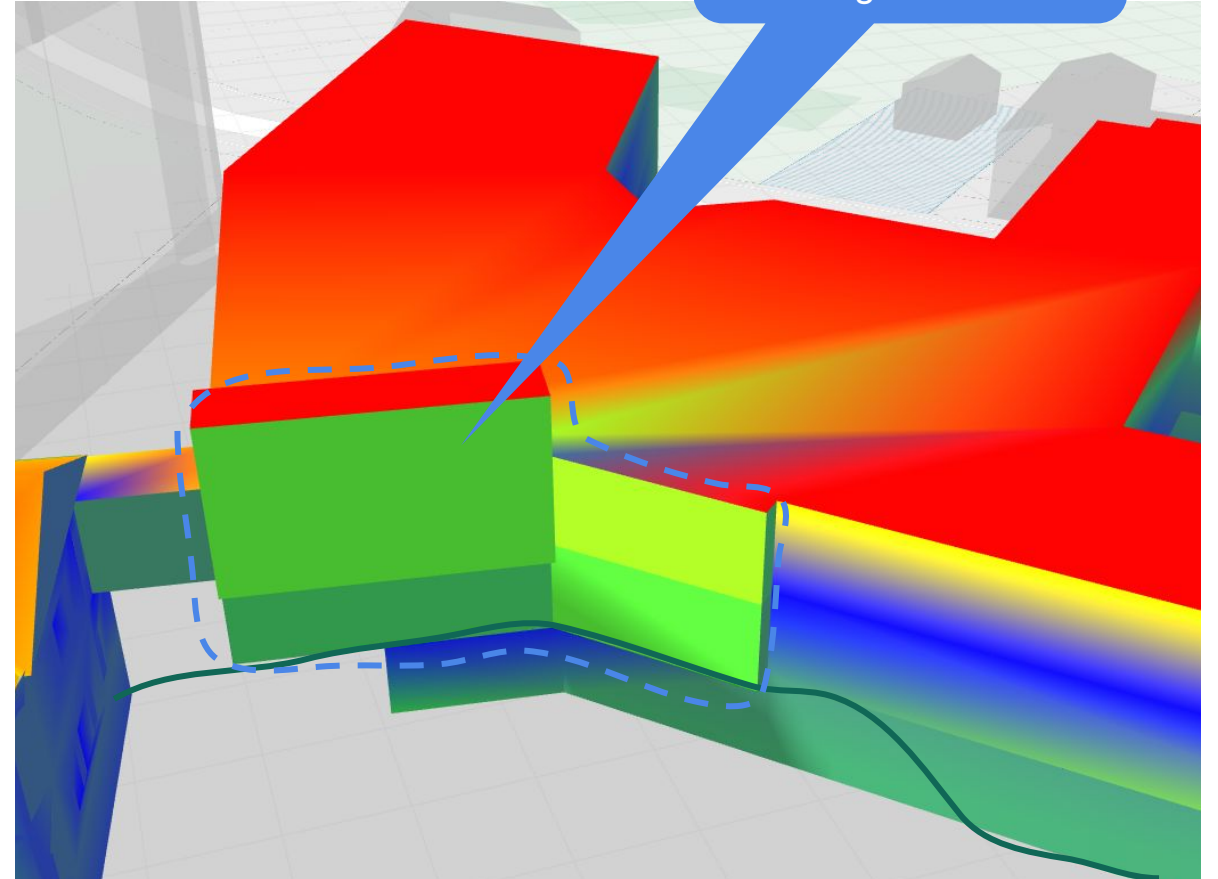
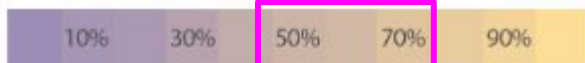
Building Scale- Solar Radiance Potential



Building Entrance - Radiance

Legend

◀ Low Radiation Potential High ▶

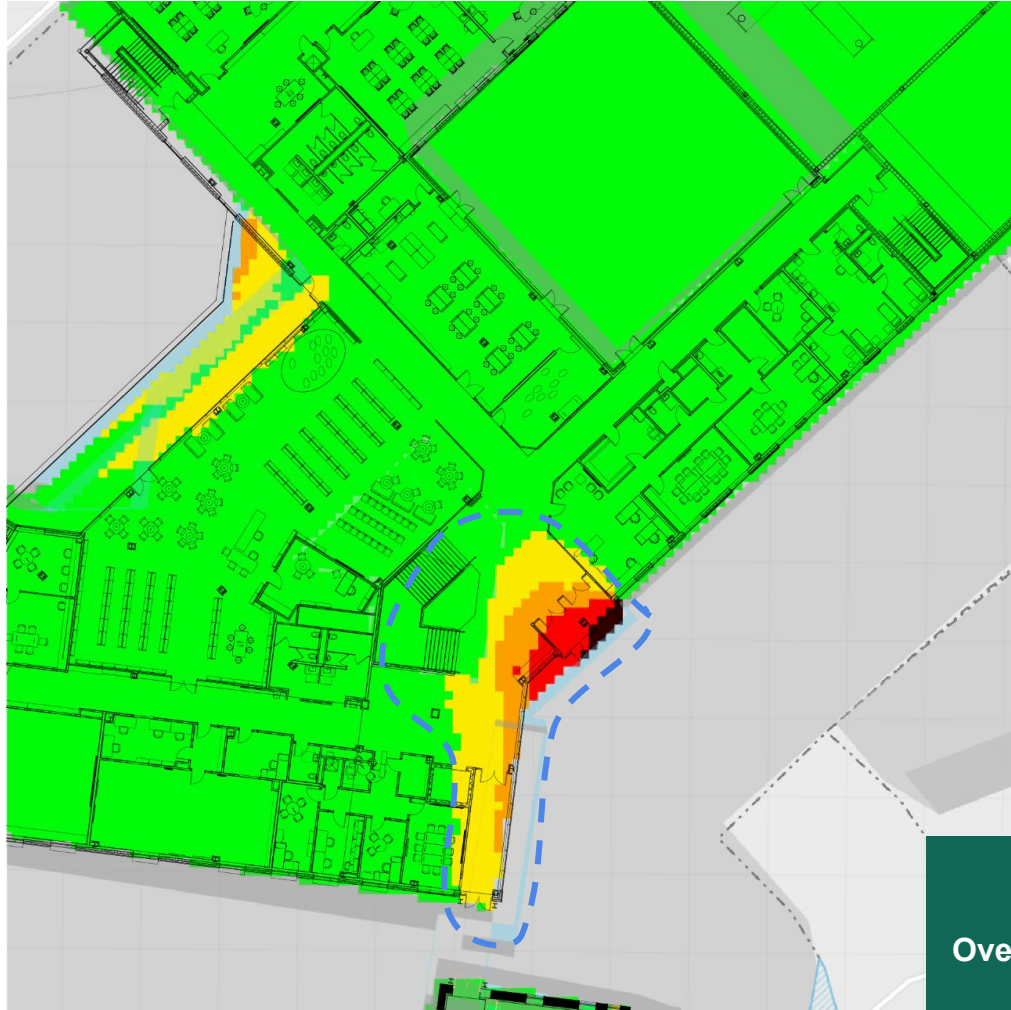


Building Entrance - Sun Hours

Legend

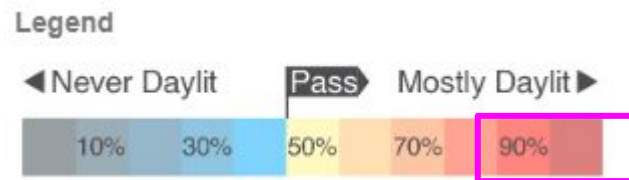
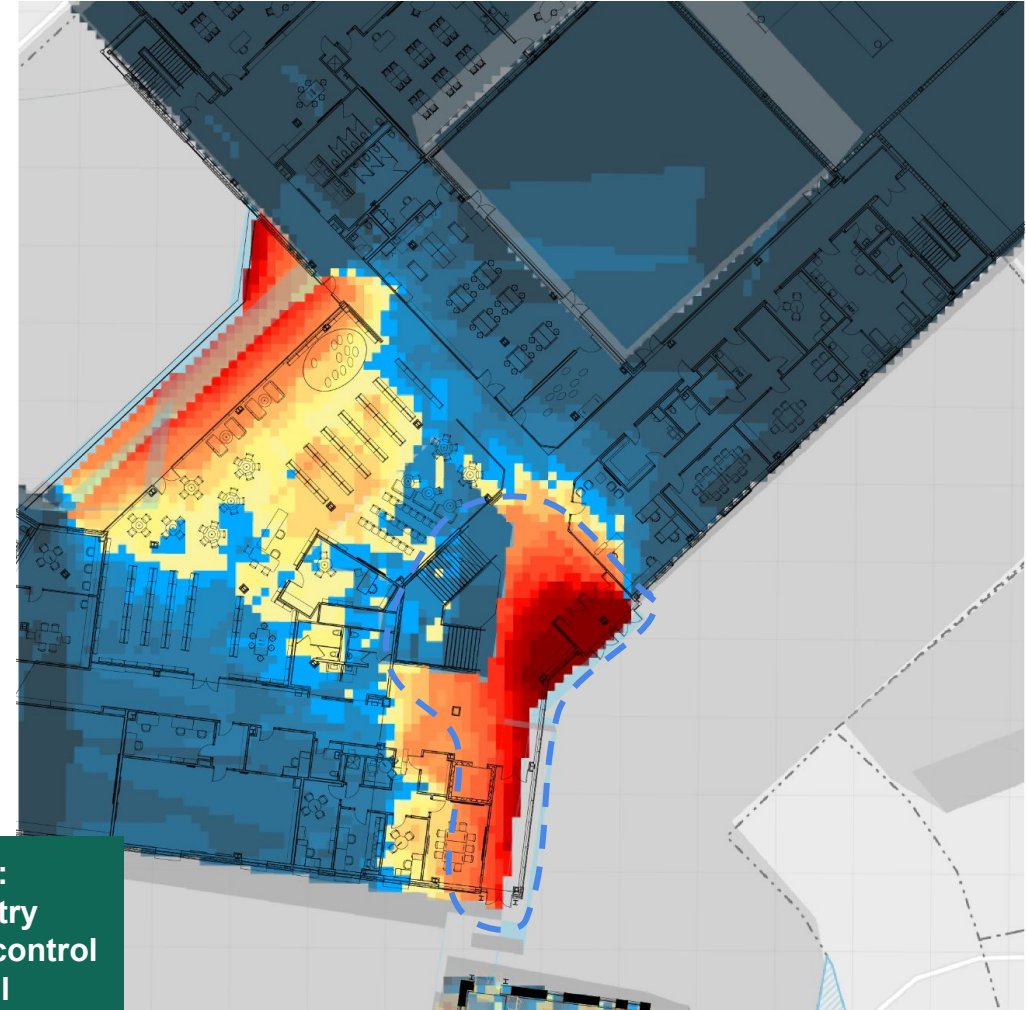
◀ 0 Hours Hours of Sunlight Maximum ▶

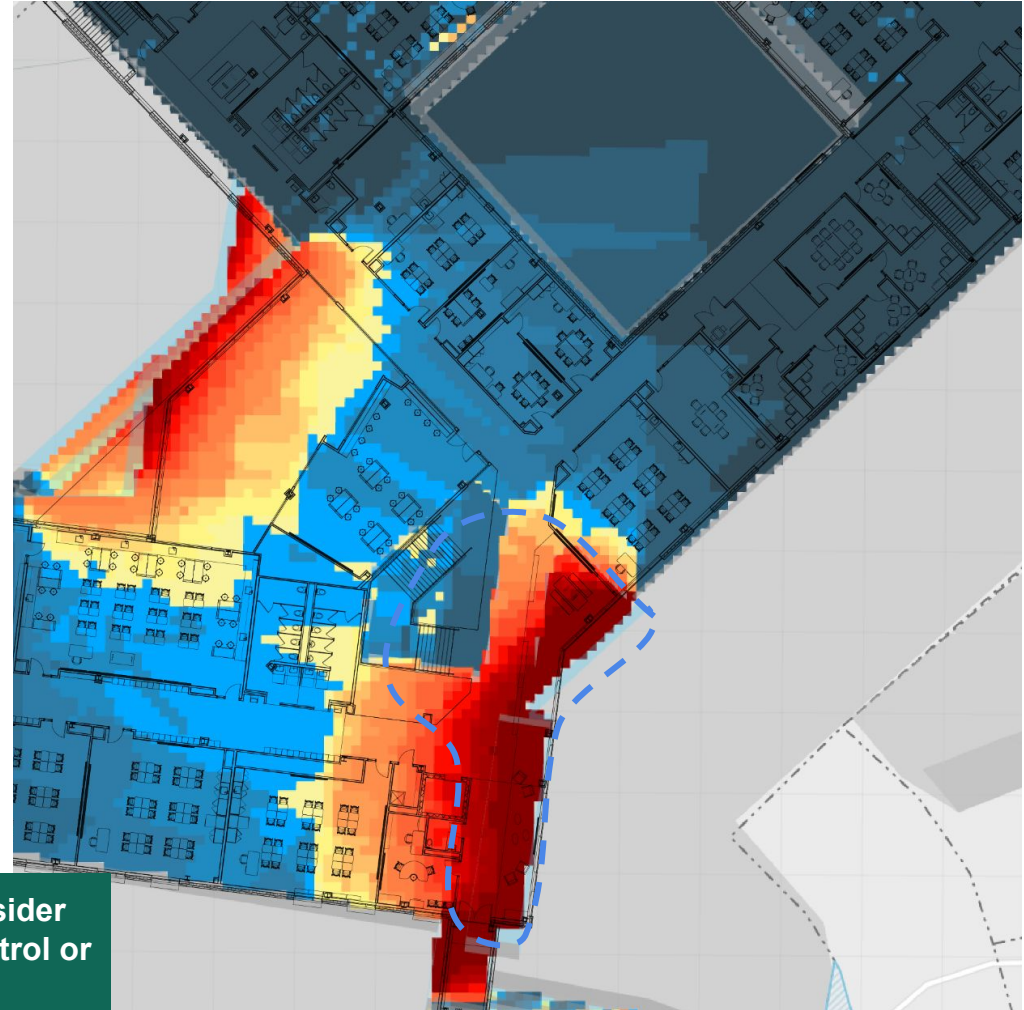
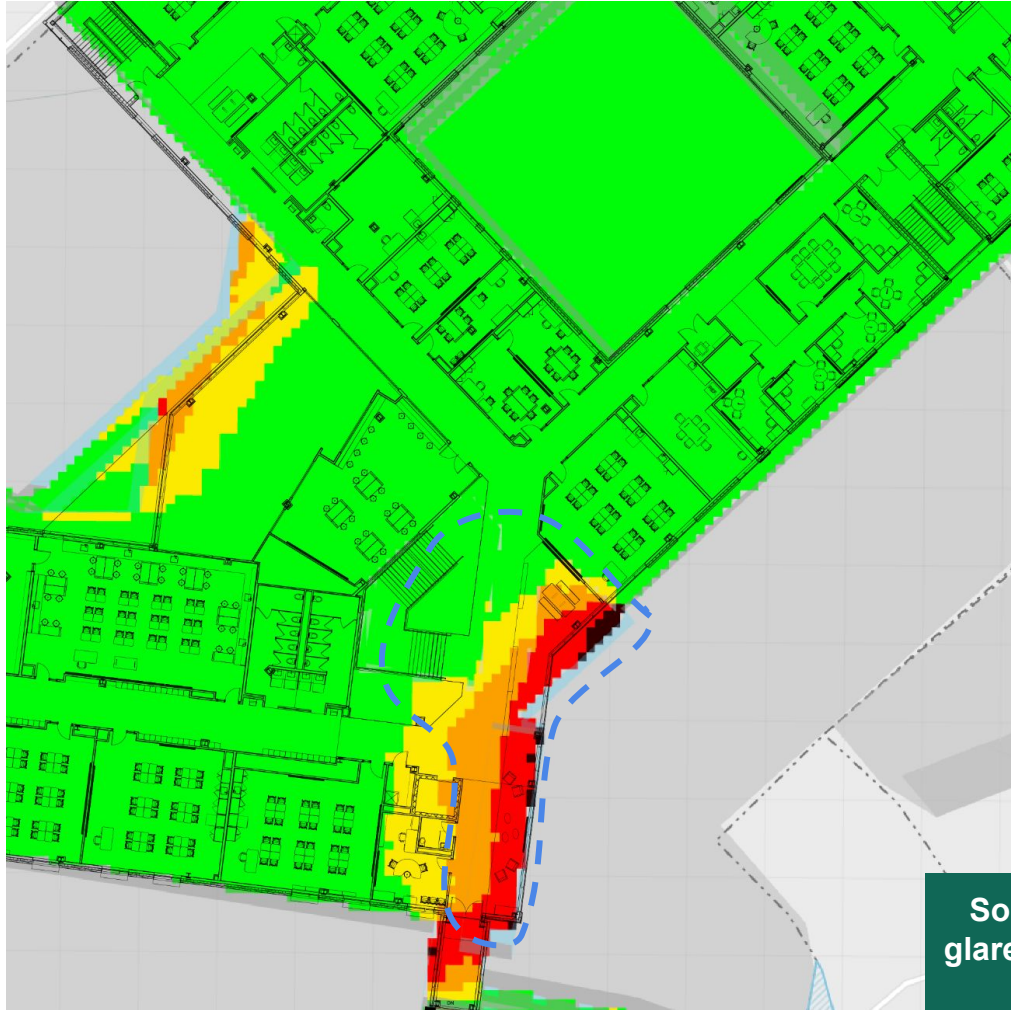




Solar Glare:
Canopy at entry
Overhang/ glare control
at entry wall
study time of day

Building Entrance - Entry Level 2

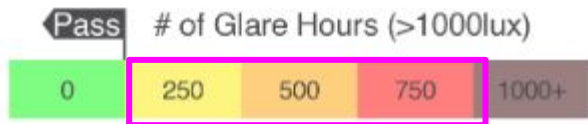




Solar Glare: consider glare/ daylight control or less glass study time of day

Building Entrance - Upper Level

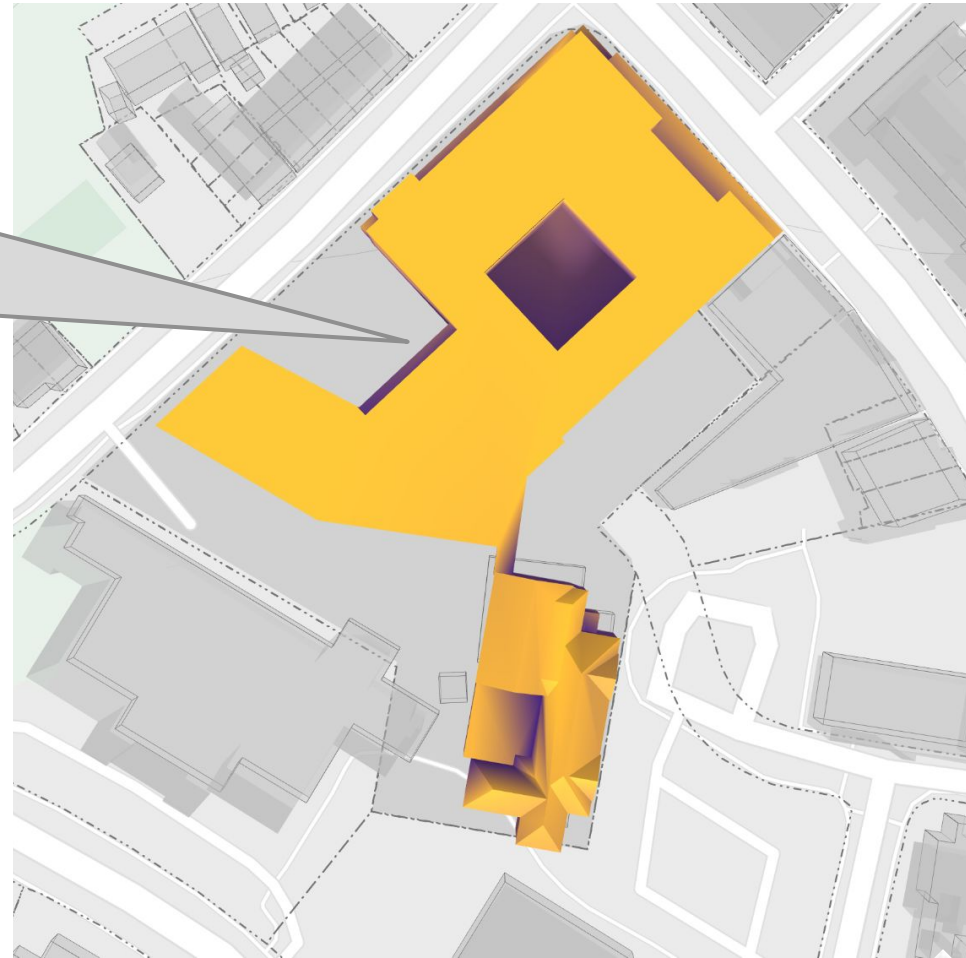
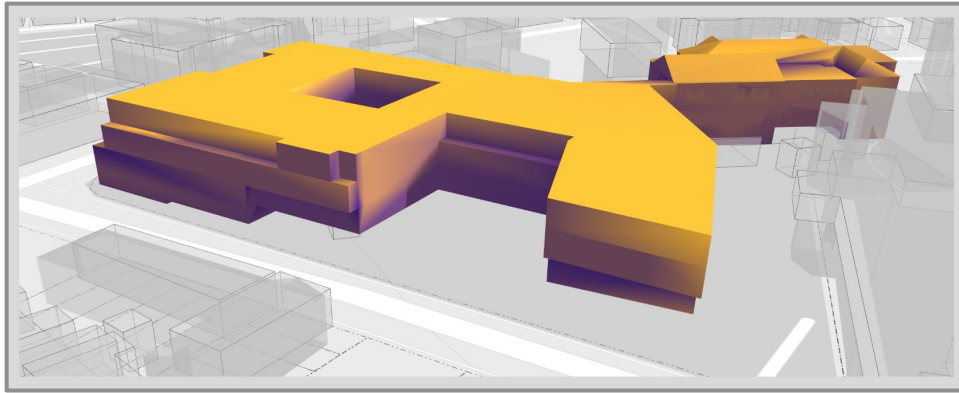
Legend



Legend

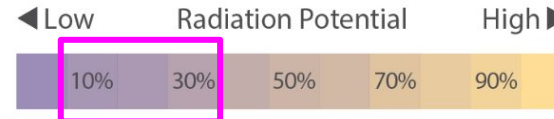


Building Scale- Solar Radiance Potential

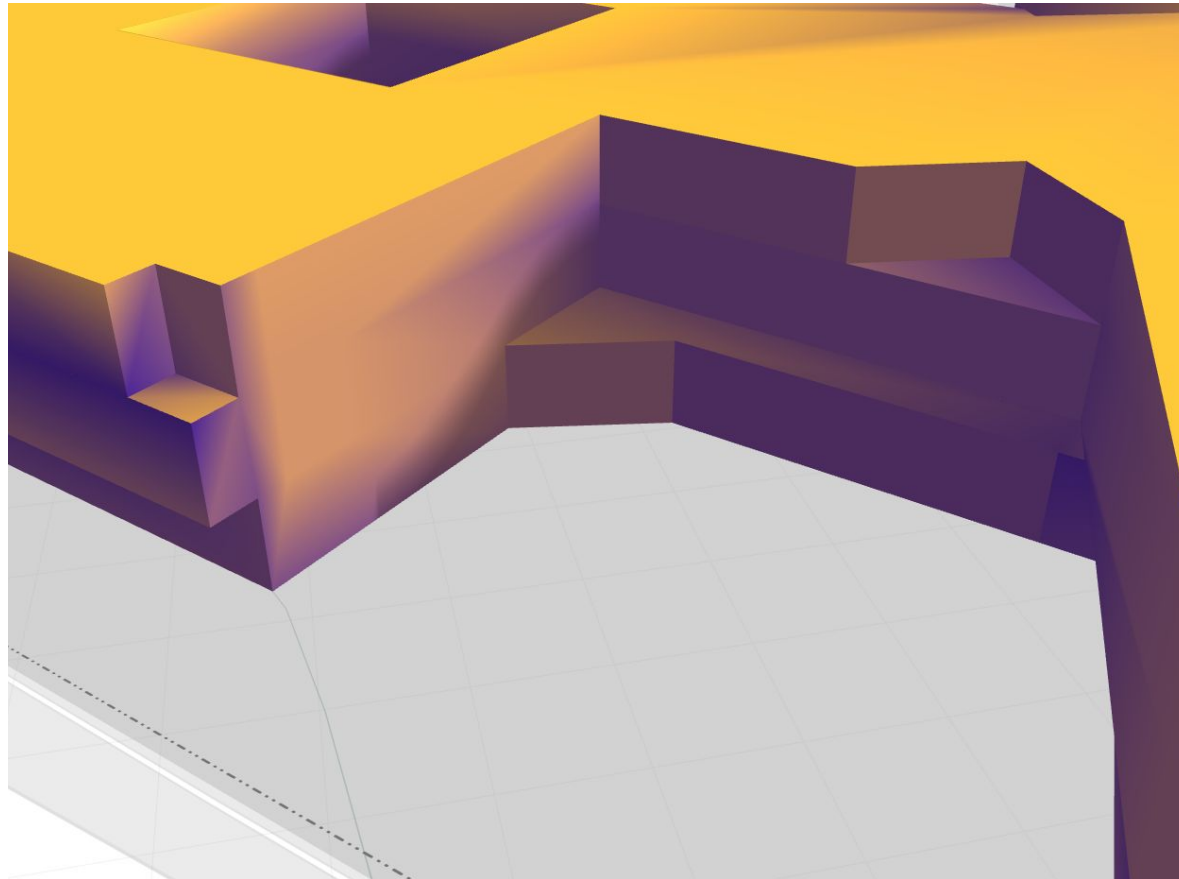


Library and Cafeteria

Legend



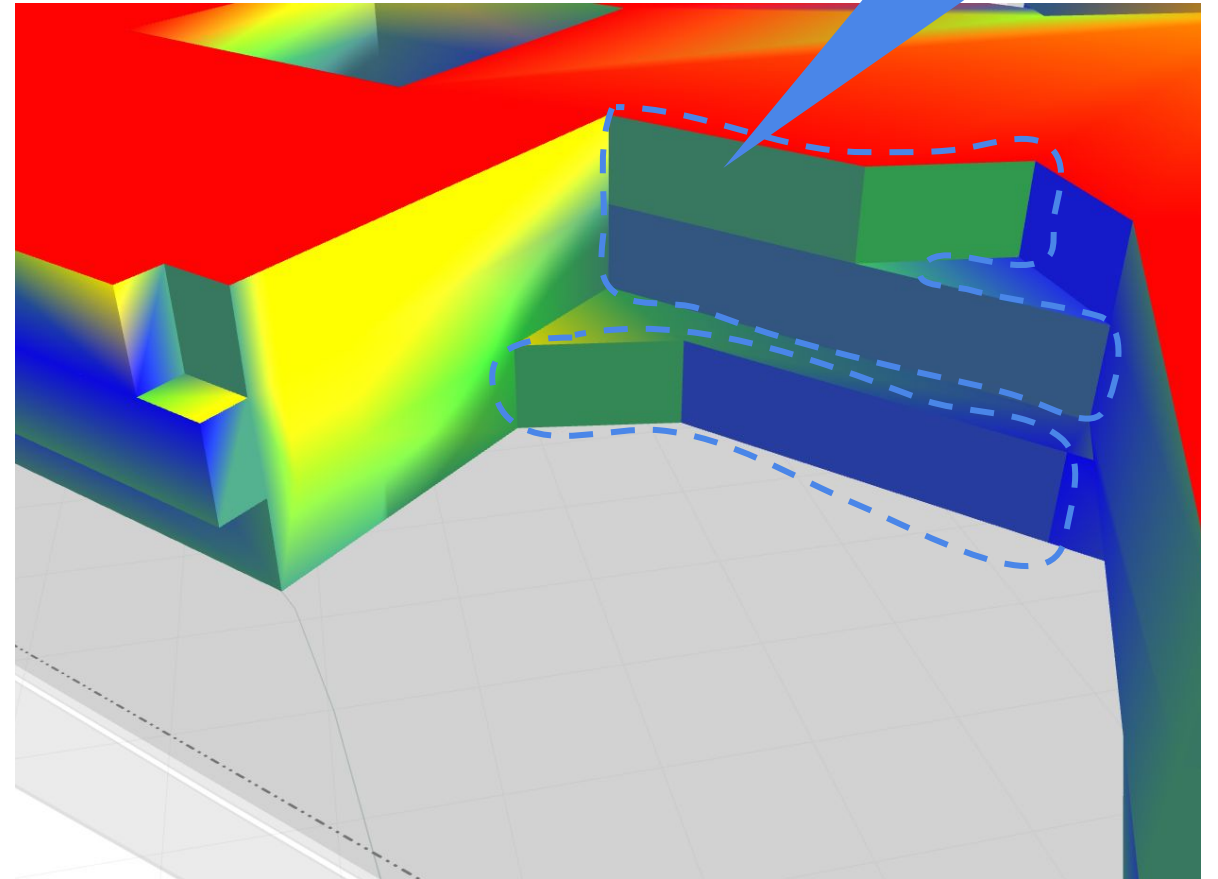
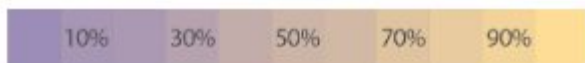
Building Scale- Solar Radiance Potential



School Street - Radiance

Legend

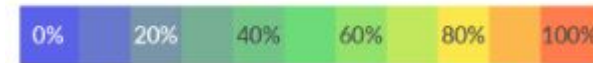
◀ Low Radiation Potential High ▶



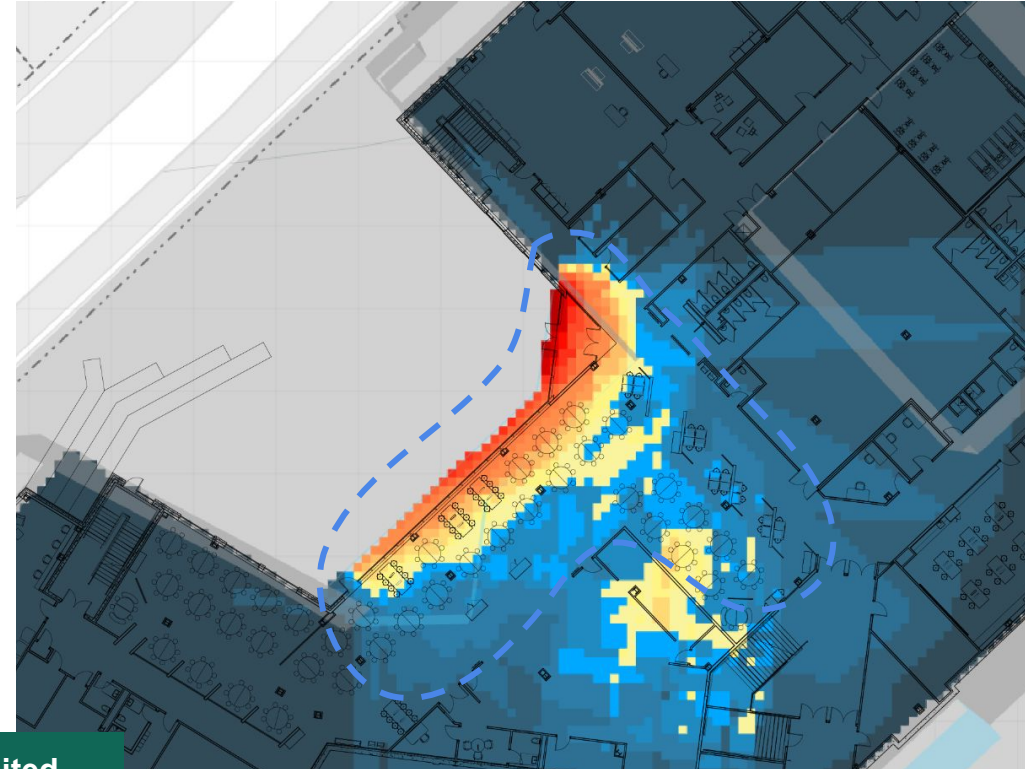
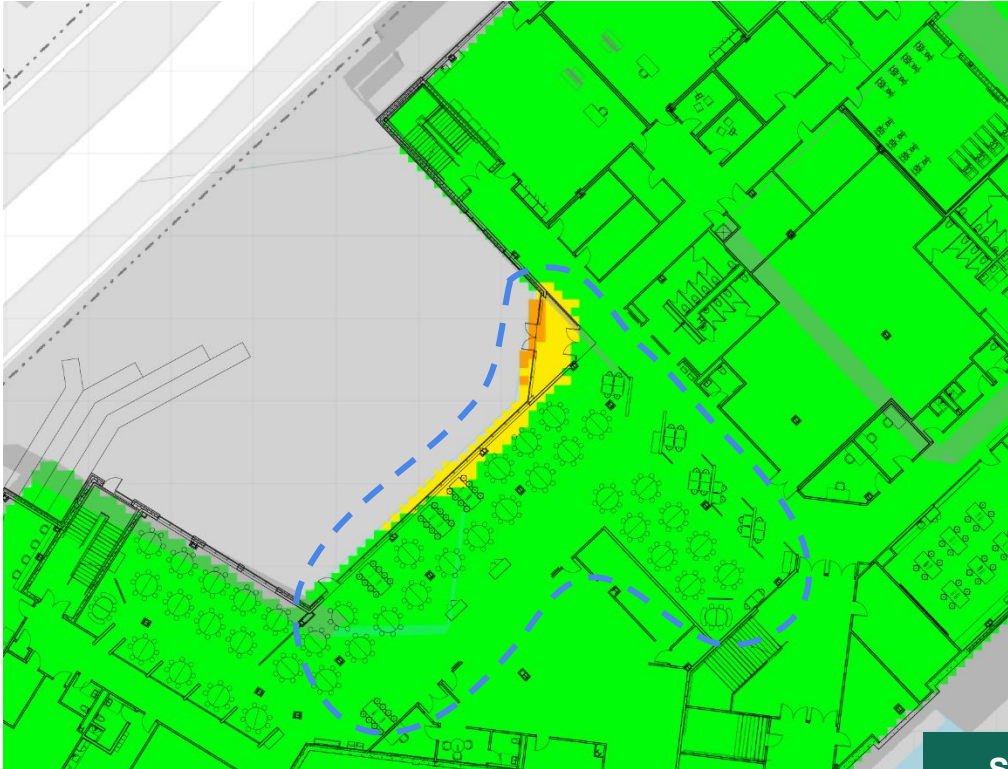
School Street - Sun Hours

Legend

◀ 0 Hours Hours of Sunlight Maximum ▶



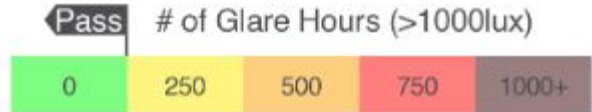
Studied "worst" case
all glass, no shading
or overhang



Solar Glare limited
Canopy/ overhang
study time of day

School Street - Entry/ Cafeteria Level 1

Legend

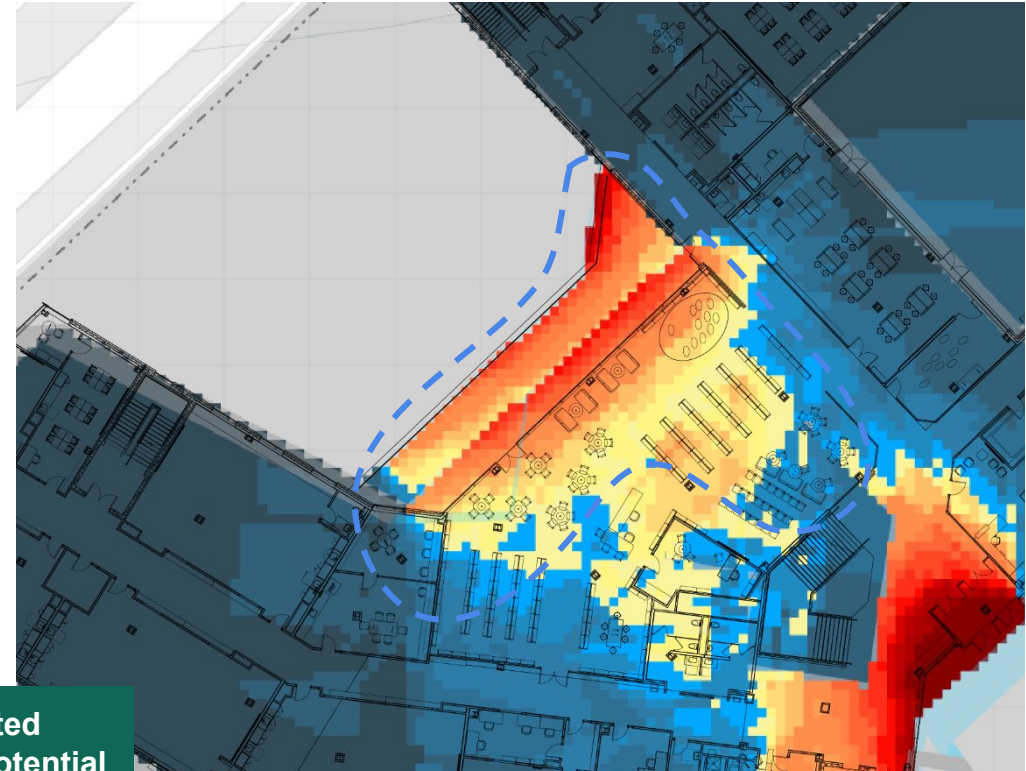


Legend



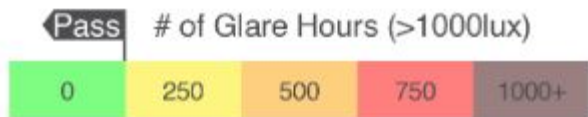


Solar Glare limited
 Excellent daylight potential
 Consider skylights at stair



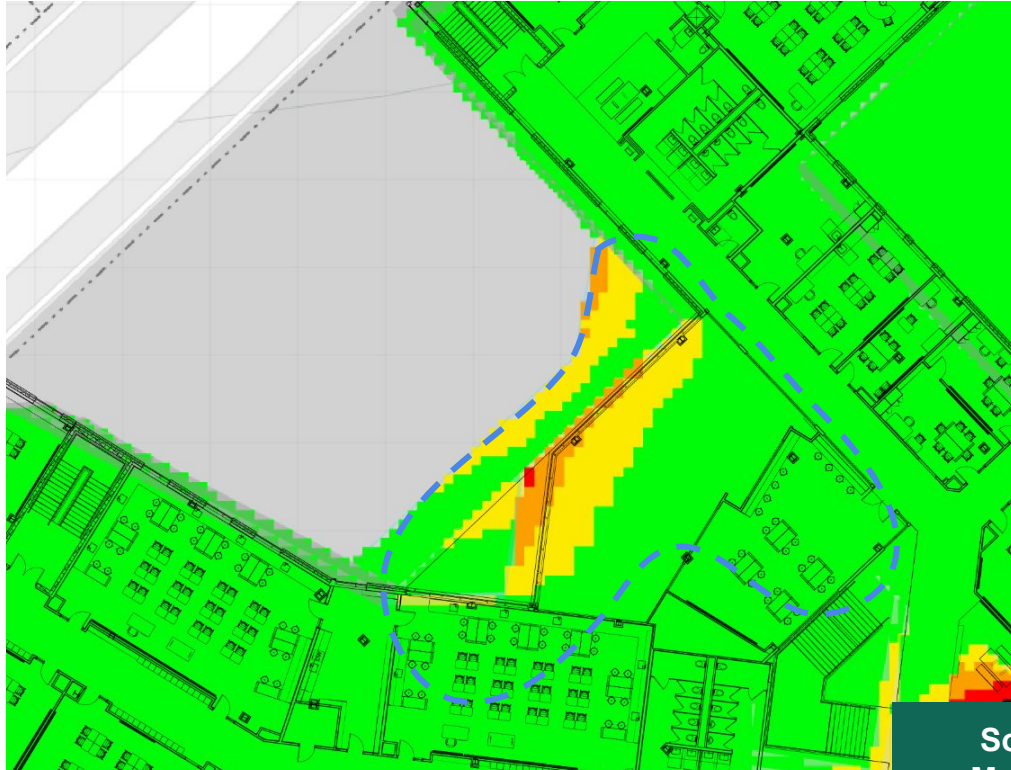
School Street - Library Level 2

Legend

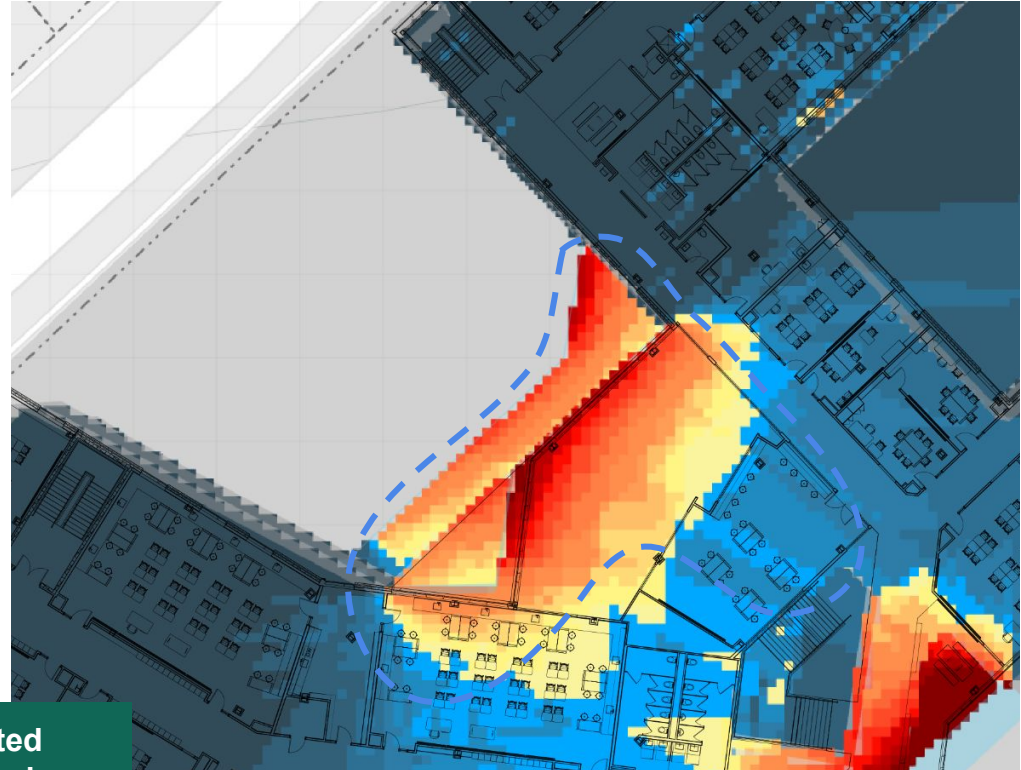


Legend



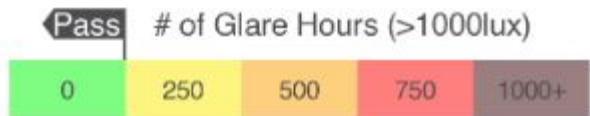


Solar Glare limited
 More glare on angle
 Excellent daylight potential
 Consider skylights at stair



School Street - Library Level 3

Legend



Legend



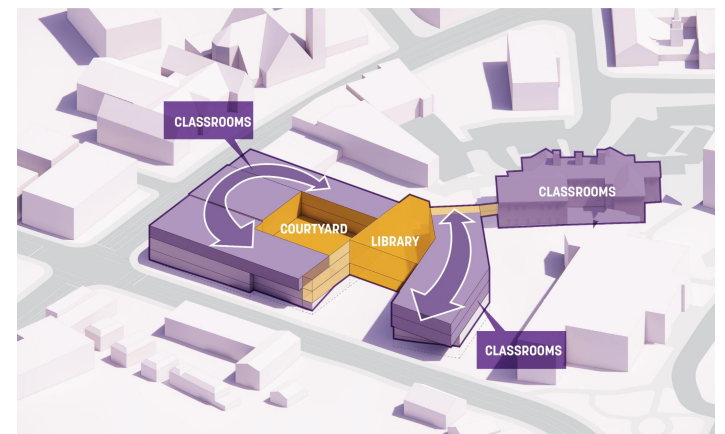
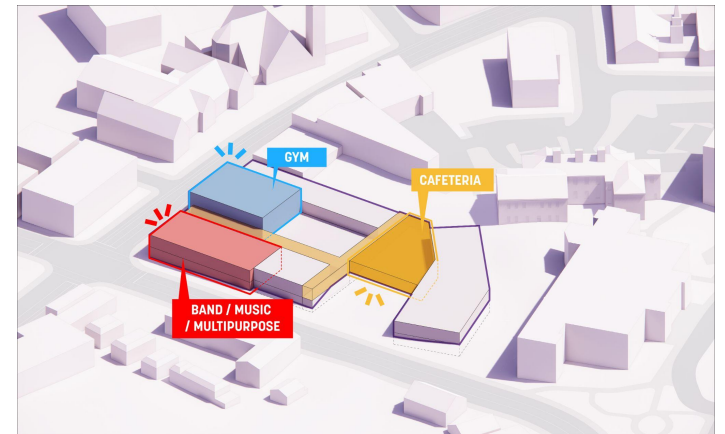
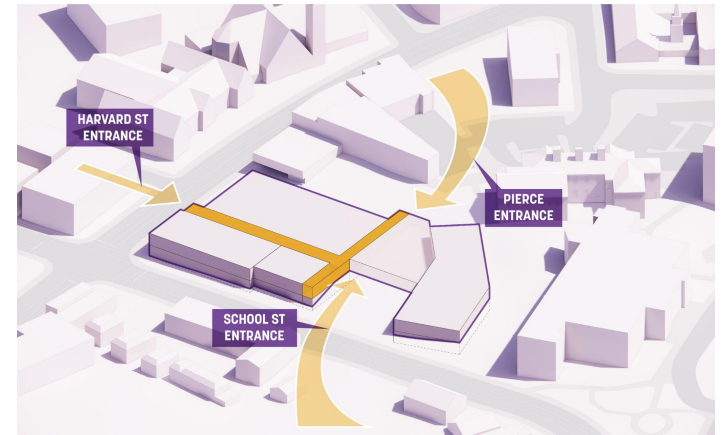
Exterior Design Progress

Exterior Design Goals + Priorities

- Responds to neighborhood context
- Responds to Educational Plan
 - Facades that make learning visible
 - Outdoor learning
 - Indoor-outdoor connections + views
 - Sense of whimsy
- Welcoming site + exterior
 - Inviting, accessible entrances
 - Safe, intuitive, pleasant pedestrian flow
- Design is forward-looking and exciting, expressing sustainability
- Sustainably designed
 - More detail on this next time!

Exterior Design Strategies

- Neighborhood context informs the massing + material palette
- “Building blocks” composed to evoke a sense of whimsy and maintain a child-appropriate scale
- Welcoming, transparent ground floor(s) and entrances
- Window strategy balances daylight, views, shading, and insulation needs
- Accessible, inviting, welcoming, safe site



Summary of what we've heard to date

DETAILS

Simplify patterning/detailing*

*but keep some visual interest

Sun shading only where needed

Be mindful of constructability + maintenance

Keep student behavior in mind

Study options for School St. overhang design + detailing

WINDOWS

Prioritize classroom daylighting

Include operable windows

Views in + out are part of Pierce culture

Review mullion proportions

Sun shading only where needed

External shading should be playful rather than overly regular

CHARACTER

Be bold, but relate to the neighborhood

Nod to the current building's personality

Quirky elements should still have purpose

Glad to see some lightness

Express variety of interior spaces on the outside of the building

MATERIALS

Balance scale + variety

Are there too many materials?

Slate at key locations is appealing

Color would be interesting*

*extent of color to be studied

Mixed feelings about existing brick + concrete

LANDSCAPES

Welcoming, accessible courtyards are successful and appealing

Outdoor elements + details can define school boundary, capture school character

Outdoor spaces provide space for learning, play, and parent community

Extension of the park?



Pierce entrance

UPDATED



Pierce entrance

UPDATED



Art courtyard

NOT ALL TREES SHOWN



Harvard Street

UPDATED



Harvard St. + School St.

UPDATED



Harvard St. + School St.

NO TREES



School St. aerial

UPDATED



School St.

SIGN OPT. 1



School St.

SIGN OPT. 2



School St. at Library

UPDATED



Discussion + Next Steps